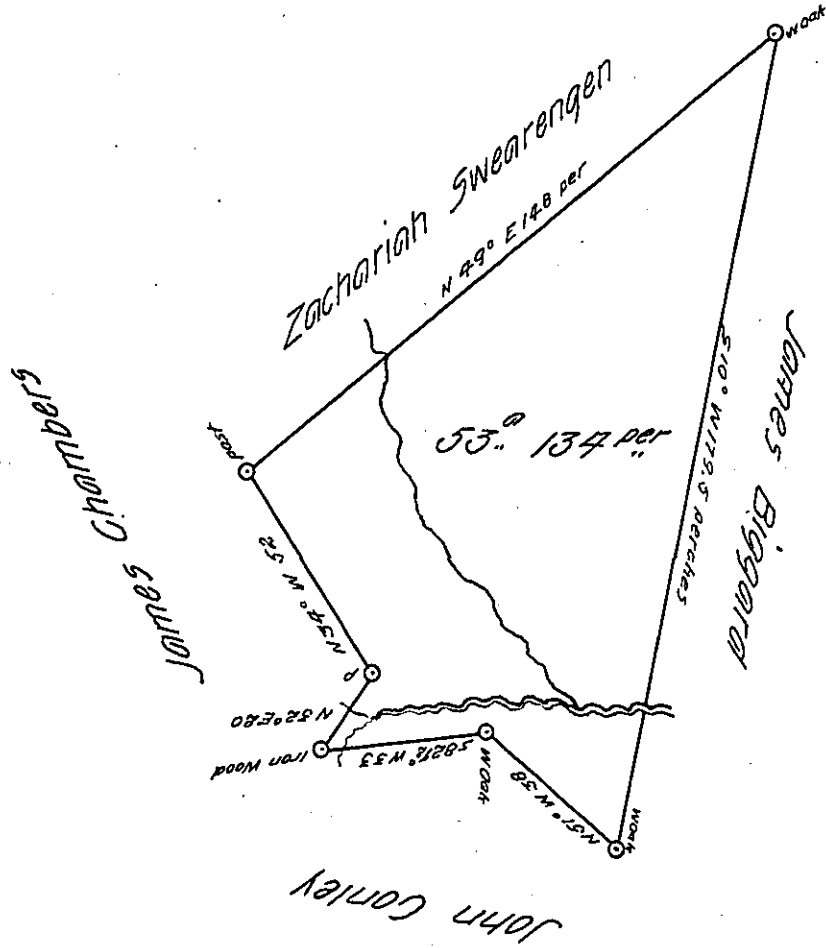


Hanover -
BEAVER

✓



I do hereby certify that the above is a true copy of a draft as entered in the official survey book of a survey made July the 5th 1827 on a warrant granted to ^{Isabella} ~~Isabella~~ Kain for fifty acres dated April 10th A.D. 1827 (and it doth not ^{appear} that the land therein mentioned has ever been appropriated to any other person) situate in Hanover township Beaver County on the East branch of Travis Creek bounded as above containing fifty three acres one hundred and thirty four and the allowance of six per cent given under my hand April 24th 1833

Jacob Spangler Esq.
Surveyor General

John Bryan D.S.

IN TESTIMONY that the above is a copy of the original remaining on file in the Department of Internal Affairs of Pennsylvania, made conformably to an Act of Assembly approved the 16th day of February, 1833, I have hereunto set my Hand and caused the Seal of said Department to be affixed at Harrisburg, this sixth day of July 1905

Luca R. Brown
Secretary of Internal Affairs.